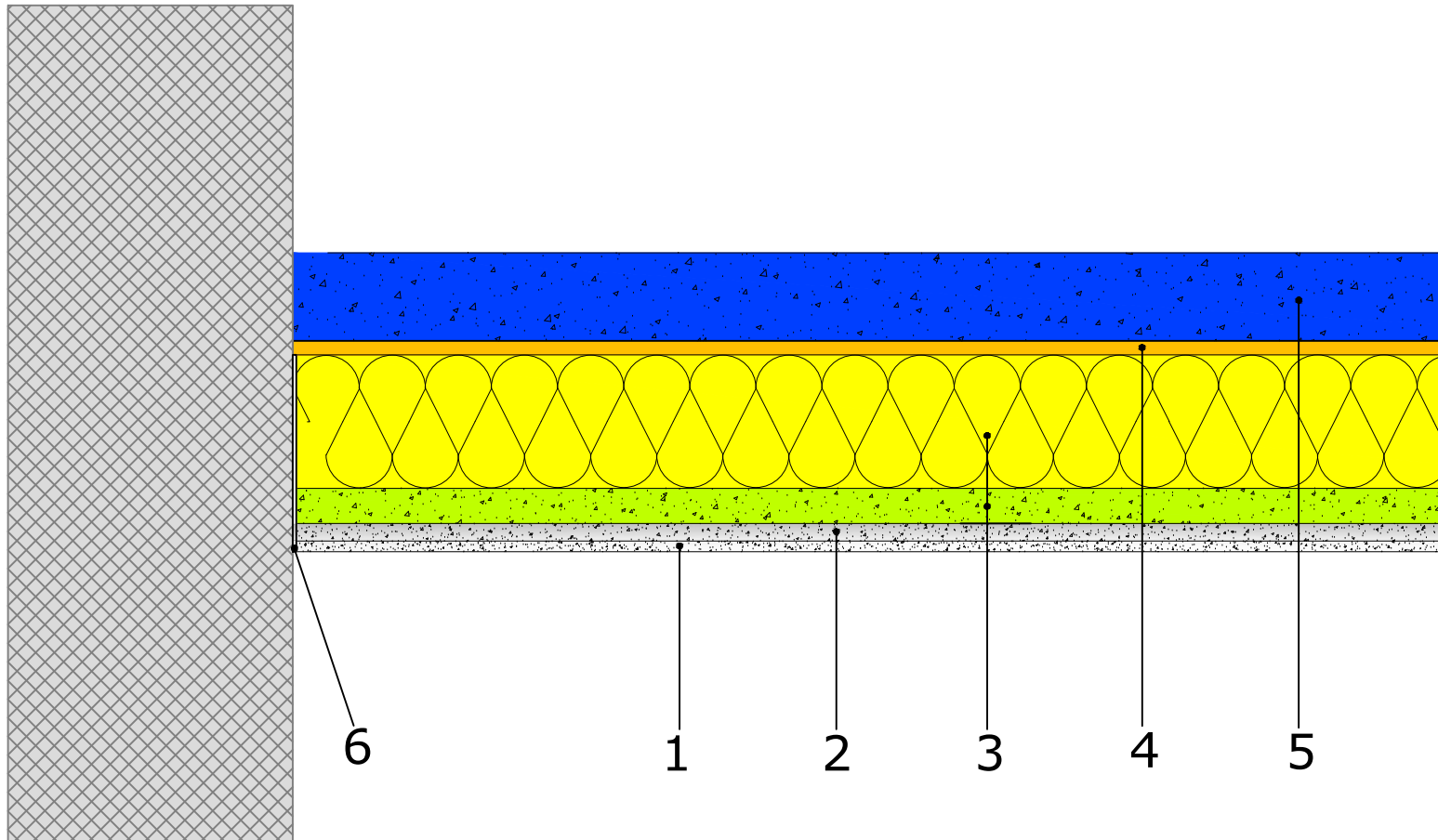





**BASWA**  
**DETAILS**



1. BASWAphon - Top surface layer
2. BASWAphon - Base primary layer
3. BASWAphon - Acoustic Panel
4. BASWafix K
5. Structural panel, e.g plasterboard
6. Paper separation strip

  
**HAMILTON**  
 ACOUSTIC SOLUTIONS

34 Purdeys Industrial Estate      Tel: 0203 595 3989  
 Purdeys Way                              Mob: 07973 886674  
 Rochford SS4 1ND                      www.hamiltonacoustic.com

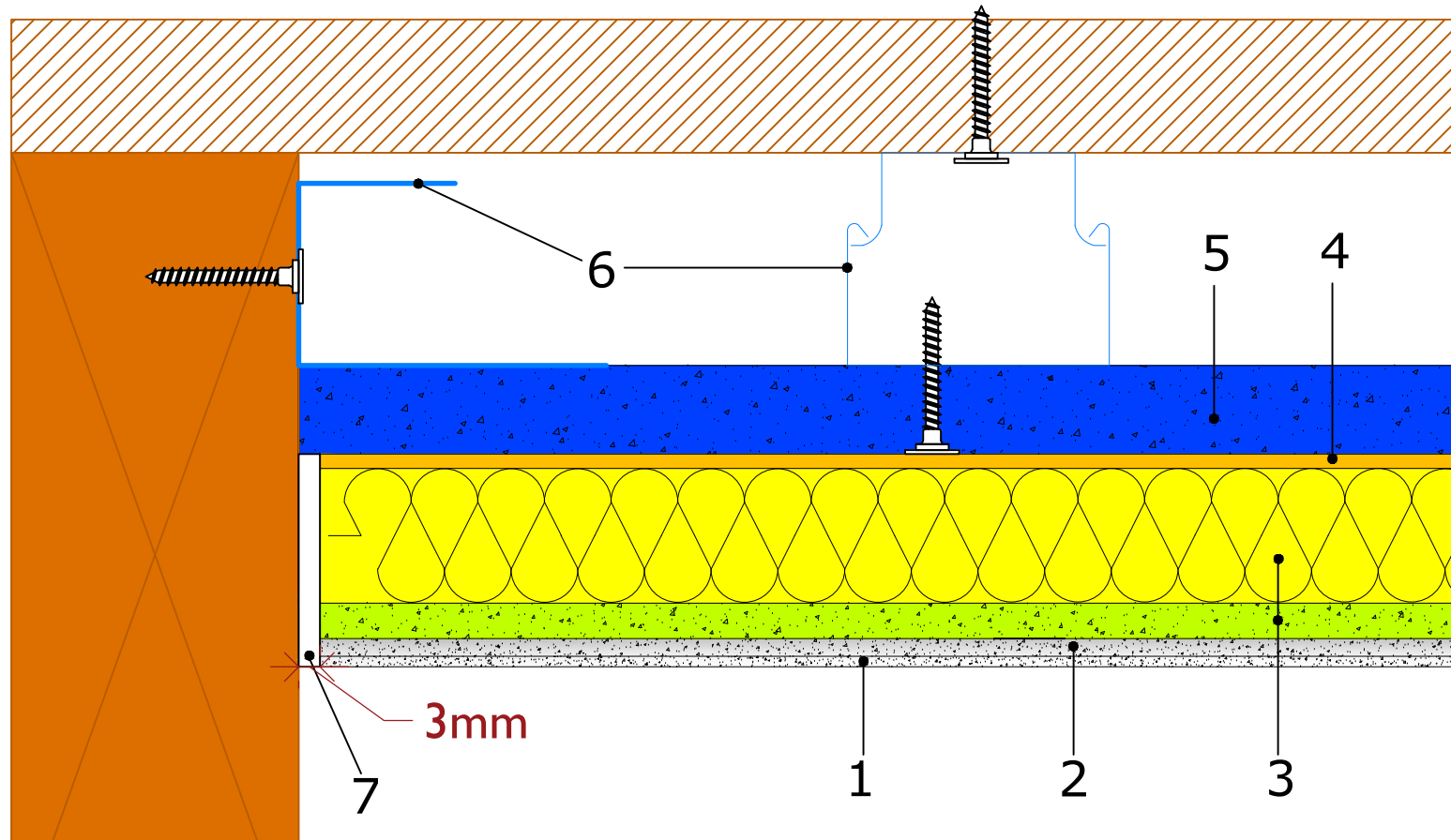
Project

## BASWA Detail

Title

### Ceiling connection to elements with severance paper separation strip

Project No. 0	Date 25.02.20	Scale 1:1 AT A4
Number Hamilton Detail 01		Revision 01



1. BASWAphon - Top surface layer
2. BASWAphon - Base primary layer
3. BASWAphon - Acoustic Panel
4. BASWafix K
5. Structural panel, e.g plasterboard
6. Suspended construction
7. Severance strip PE Foam ( cut off afterwards)

**HAMILTON**  
ACOUSTIC SOLUTIONS

34 Purdeys Industrial Estate      Tel:0203 595 3989  
Purdeys Way                              Mob:07973 886674  
Rochford SS4 1ND                      www.hamiltonacoustic.com

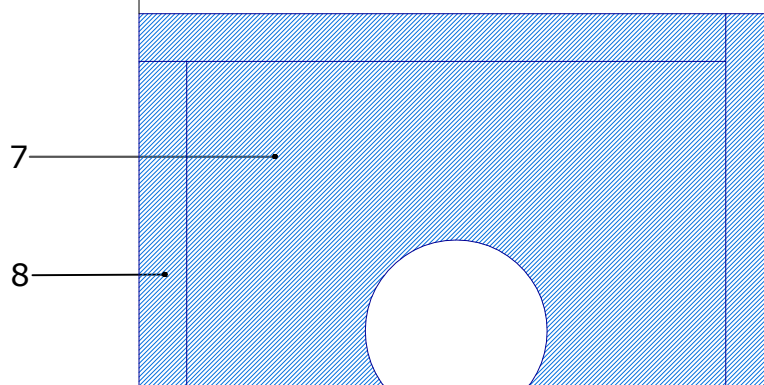
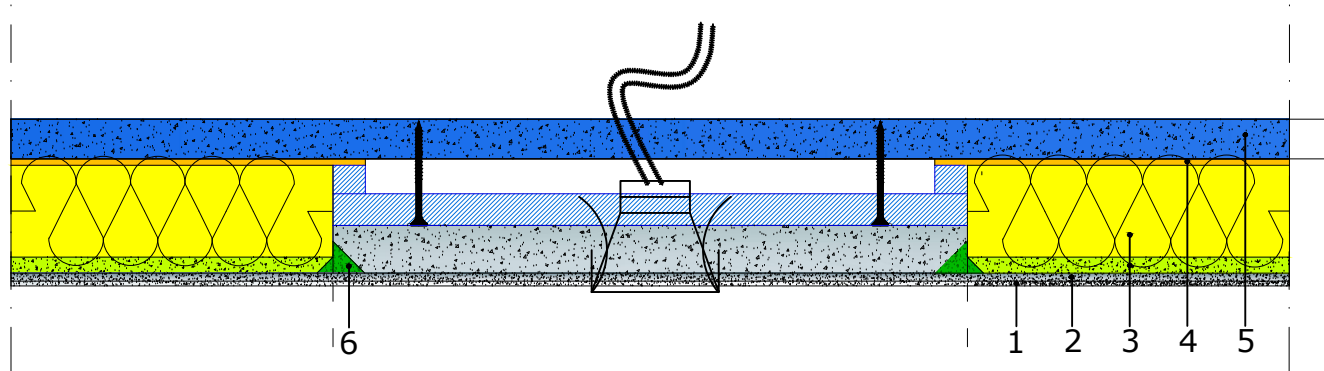
Project

## BASWA Detail

Title

### Ceiling connection to elements with severance strip PE foam on timber rafter

Project No. 0	Date 25.02.20	Scale 1:1 AT A4
Number Hamilton Detail 02		Revision 01



1. BASWAphon - Top surface layer
2. BASWAphon - Base primary layer
3. BASWAphon - Acoustic Panel
4. BASWAfix K
5. Structural panel e.g. plasterboard
6. BASWAphon Fill seam filler
7. Gypsum fibreboard with 10mm pre-coating (BASWA-IP)
8. Fixing / spacer frame

**HAMILTON**  
ACOUSTIC SOLUTIONS

34 Purdeys Industrial Estate      Tel: 0203 595 3989  
Purdeys Way                              Mob: 07973 886674  
Rochford SS4 1ND                      www.hamiltonacoustic.com

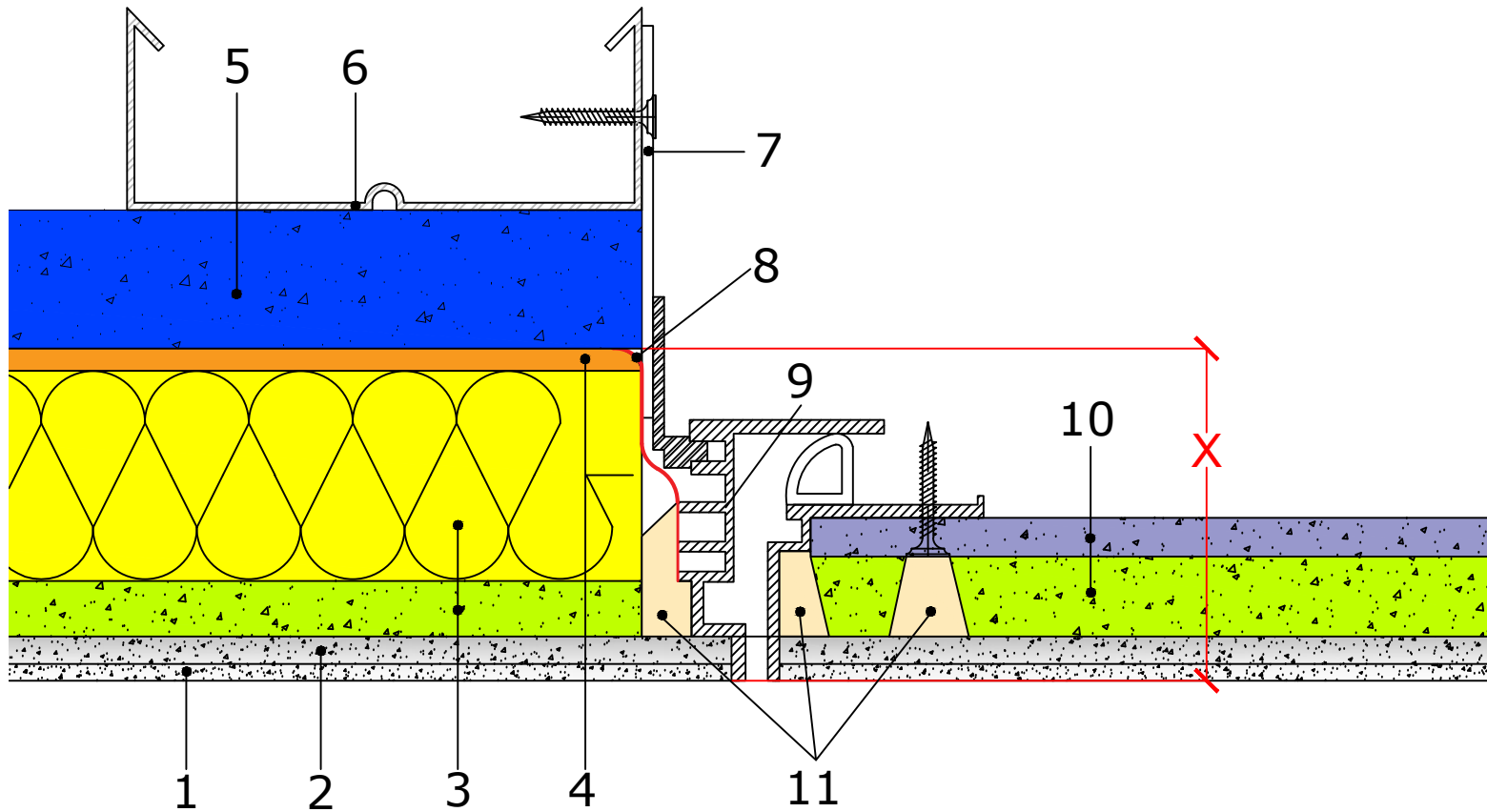
Project

## BASWA Detail

Title

### Installation of spotlights, speakers, motion sensors, etc. with BASWA IP

Project No. 0	Date 25.02.20	Scale 1:1 AT A4
Number Hamilton Detail 03		Revision 01



1. BASWAphon - Top surface layer
2. BASWAphon - Base primary layer
3. BASWAphon - Acoustic Panel
4. BASWAfix K
5. Structural panel e.g. plasterboard
6. Suspended Construction
7. Access panels retaining tab
8. Vapour barrier adhesive tape (air tight)
9. Access panel BASWA (outer frame)
10. BASWAphon acoustic Inlay for access panels and projector hoists
11. BASWAphon Fill seam filler

**HAMILTON**  
ACOUSTIC SOLUTIONS

34 Purdeys Industrial Estate      Tel: 0203 595 3989  
Purdeys Way                              Mob: 07973 886674  
Rochford SS4 1ND                        www.hamiltonacoustic.com

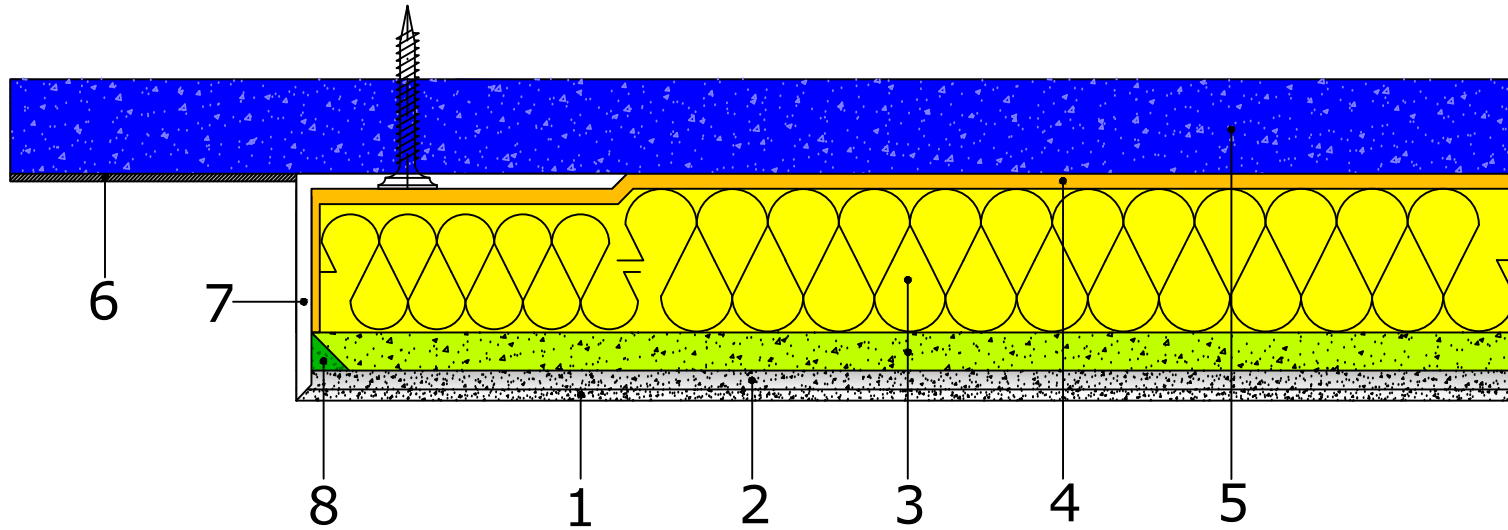
Project

## BASWA Detail


Title

### Installation of access panels

Project No. 0	Date 25.02.20	Scale VARIES
Number Hamilton Detail 04		Revision 01



1. BASWAphon - Top surface layer
2. BASWAphon - Base primary layer
3. BASWAphon - Acoustic Panel
4. BASWAfix K
5. Structural panel e.g. plasterboard
6. Smooth plaster painted, or similar
7. Aluminium angle profile, white coated with PUR
8. BASWAphon Fill seam filler

  
**HAMILTON**  
 ACOUSTIC SOLUTIONS

34 Purdeys Industrial Estate      Tel: 0203 595 3989  
 Purdeys Way                              Mob: 07973 886674  
 Rochford SS4 1ND                      www.hamiltonacoustic.com

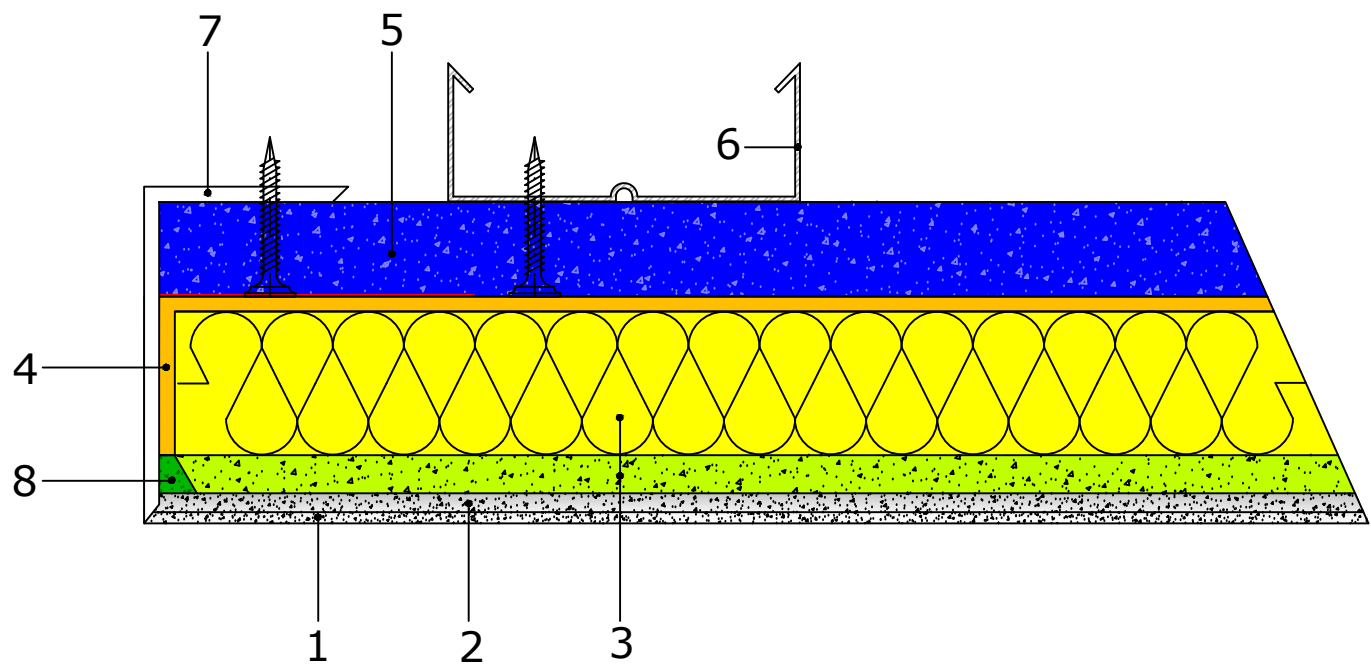
Project

## BASWA Detail

Title

### Edge formation with aluminum L angle profile

Project No. 0	Date 25.02.20	Scale 1:1 AT A4
Number Hamilton Detail 05		Revision 01



- 1. BASWAphon - Top surface layer
- 2. BASWAphon - Base primary layer
- 3. BASWAphon - Acoustic Panel
- 4. BASWAfix K
- 5. Structural panel, e.g. plasterboard
- 6. Suspended construction
- 7. Angle profile chrome steel or anodized aluminium visible
- 8. BASWAphon Fill seam filler

**HAMILTON**  
ACOUSTIC SOLUTIONS

34 Purdeys Industrial Estate      Tel: 0203 595 3989  
Purdeys Way                              Mob: 07973 886674  
Rochford SS4 1ND                      www.hamiltonacoustic.com

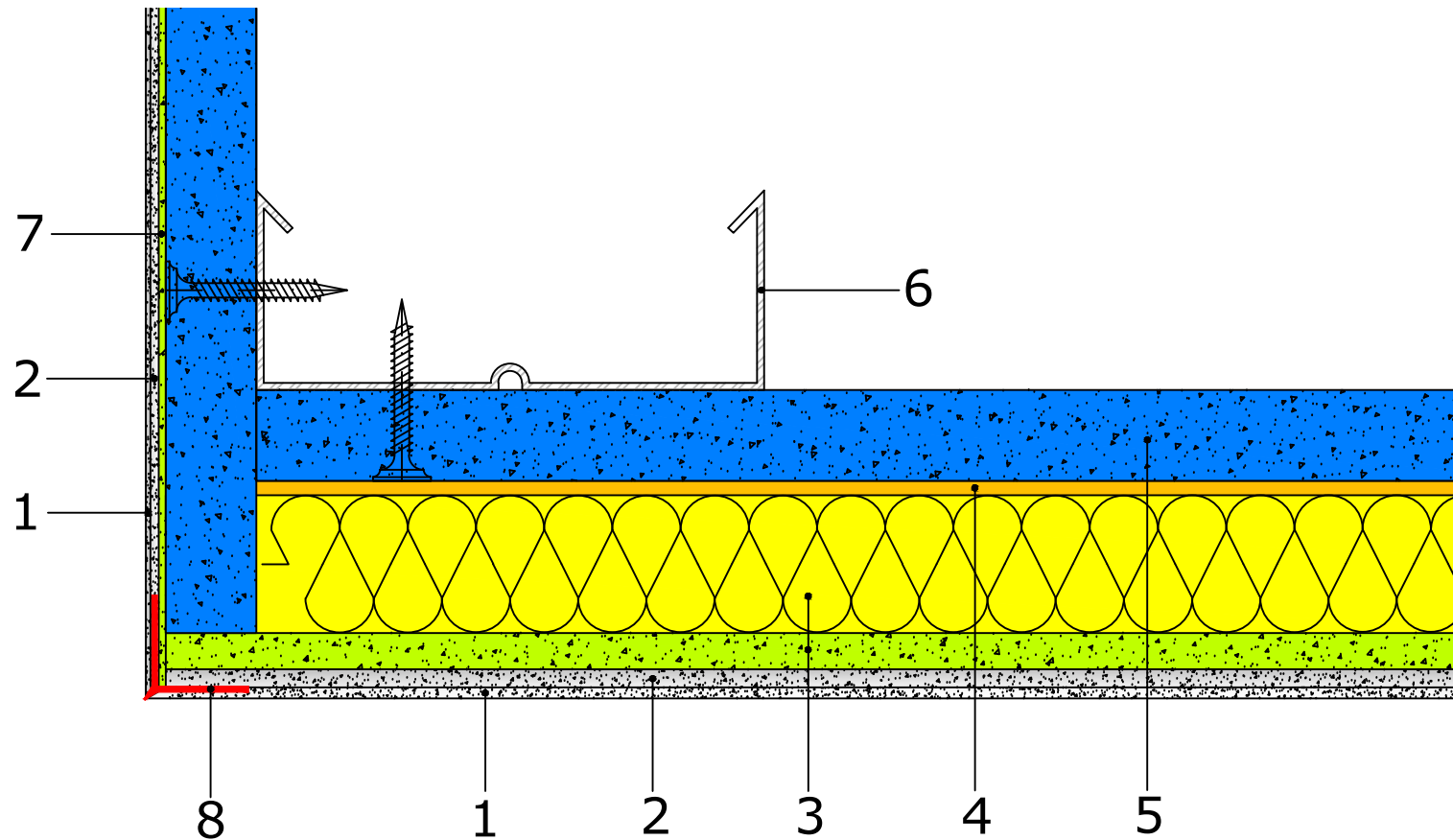
Project

## BASWA Detail

Title

Edge formation ceiling canopy with  
angle profile chrome steel installed  
visibly top edge plasterboard

Project No. 0	Date 25.02.20	Scale 1:1 AT A4
Number Hamilton Detail 06		Revision 01



1. BASWaphon - Top surface layer
2. BASWaphon - Base primary layer
3. BASWaphon - Acoustic Panel
4. BASWafix K
5. Structural panel e.g plasterboard, Pre-fabricated plasterboard folding element
6. Construction profile
7. BASWaphon Fill Pre-coating/ or leveling plaster contains plaster, primed
8. BASWaphon edge protection profile PVC

**HAMILTON**  
ACOUSTIC SOLUTIONS

34 Purdeys Industrial Estate      Tel: 0203 595 3989  
Purdeys Way                              Mob: 07973 886674  
Rochford SS4 1ND                      www.hamiltonacoustic.com

Project

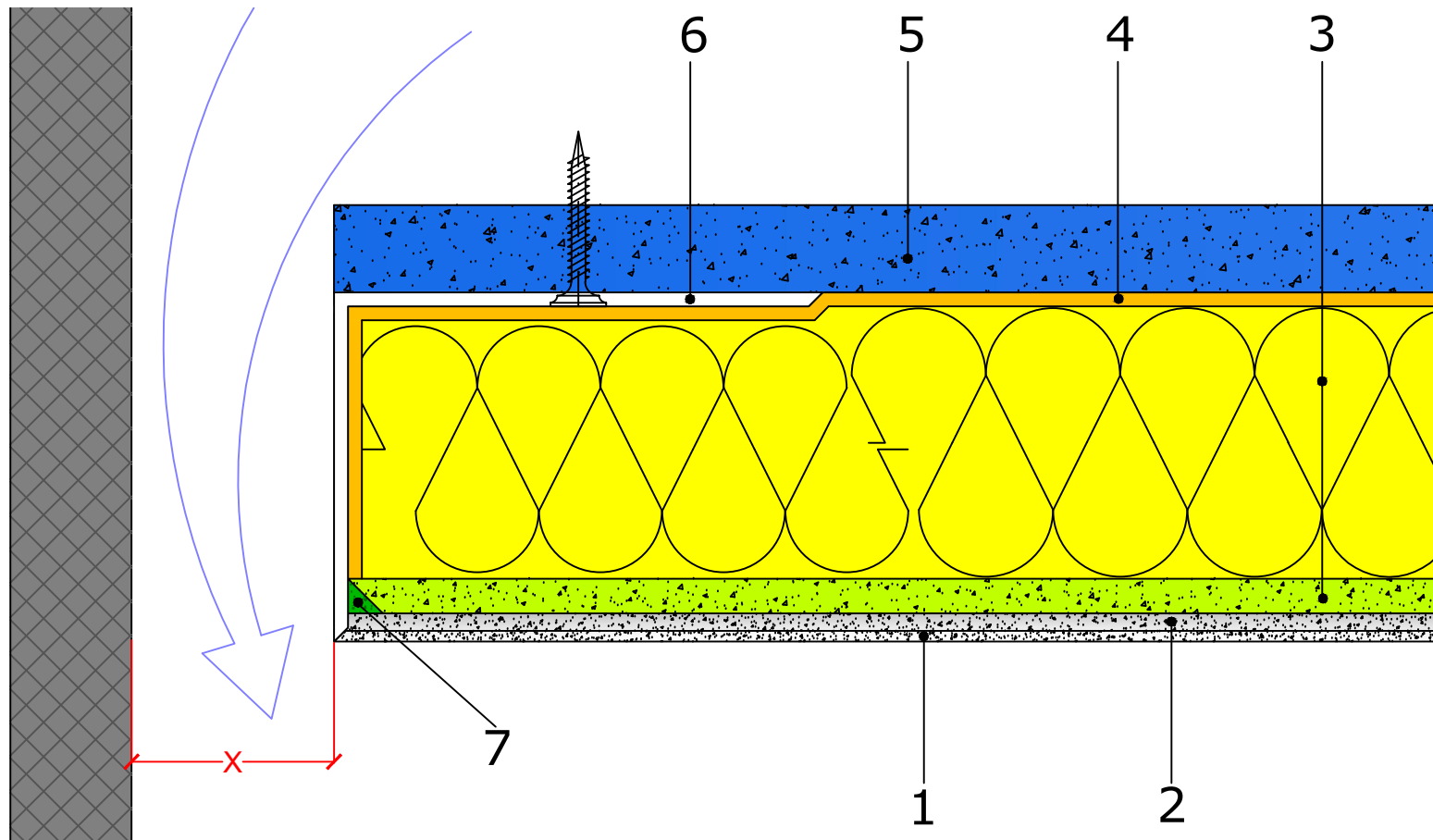
## BASWA Detail

Title

**Edge finish 90 outer corner  
with BASWaphon coating on  
one side**

Project No. 0	Date 25.02.20	Scale 1:1 AT A4
Number Hamilton Detail 07		Revision 01





1. BASWAphon - Top surface layer
2. BASWAphon - Base primary layer
3. BASWAphon - Acoustic Panel
4. BASWafix K
5. Structural panel e.g plasterboard
6. Aluminium angle profile, white coated with PUR
7. BASWAphon Fill seam filler

  
**HAMILTON**  
 ACOUSTIC SOLUTIONS

34 Purdeys Industrial Estate      Tel: 0203 595 3989  
 Purdeys Way                              Mob: 07973 886674  
 Rochford SS4 1ND                      www.hamiltonacoustic.com

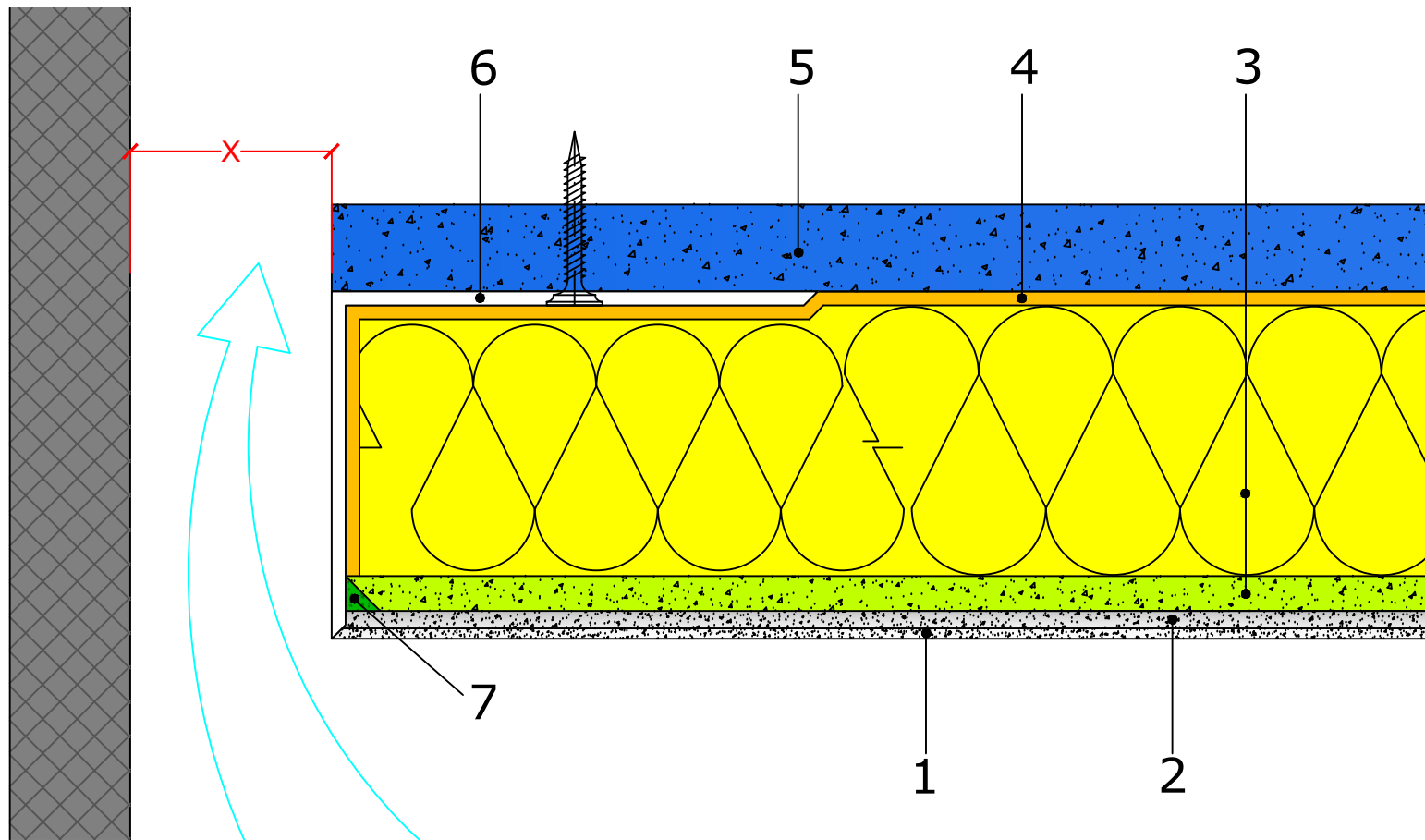
Project

## BASWA Detail


Title

### Wall connection with shadow gap low-pressure ceiling system exhaust

Project No. 0	Date 25.02.20	Scale 1:1 AT A4
Number Hamilton Detail 08		Revision 01



1. BASWAphon - Top surface layer
2. BASWAphon - Base primary layer
3. BASWAphon - Acoustic Panel
4. BASWafix K
5. Structural panel e.g plasterboard
6. Aluminium angle profile, white coated with PUR
7. BASWAphon Fill seam filler

  
**HAMILTON**  
 ACOUSTIC SOLUTIONS

34 Purdeys Industrial Estate      Tel: 0203 595 3989  
 Purdeys Way                              Mob: 07973 886674  
 Rochford SS4 1ND                      www.hamiltonacoustic.com

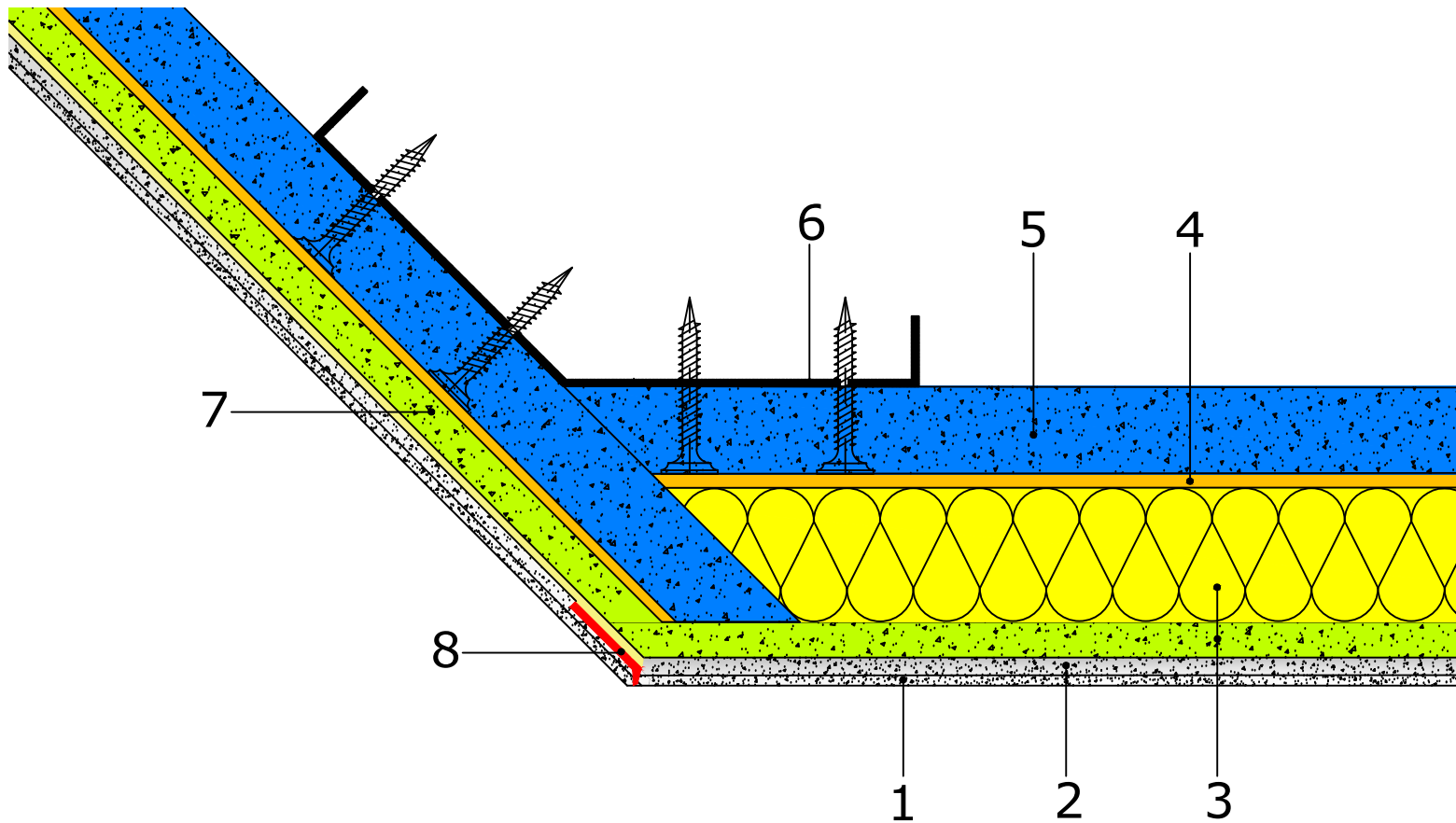
Project

## BASWA Detail

Title

### Wall connection with shadow gap low-pressure ceiling system intake

Project No. 0	Date 25.02.20	Scale 1:1 AT A4
Number Hamilton Detail 09		Revision 01



1. BASWAphon - Top surface layer
2. BASWAphon - Base primary layer
3. BASWAphon - Acoustic Panel
4. BASWAfix K
5. Structural panel e.g plasterboard Pre-fabricated plasterboard folding element
6. Construction profile 135
7. BASWAphon Hybrid panel
8. BASWAphon end profile PVC, (single angle leg)



34 Purdeys Industrial Estate      Tel: 0203 595 3989  
Purdeys Way                              Mob: 07973 886674  
Rochford SS4 1ND                      www.hamiltonacoustic.com

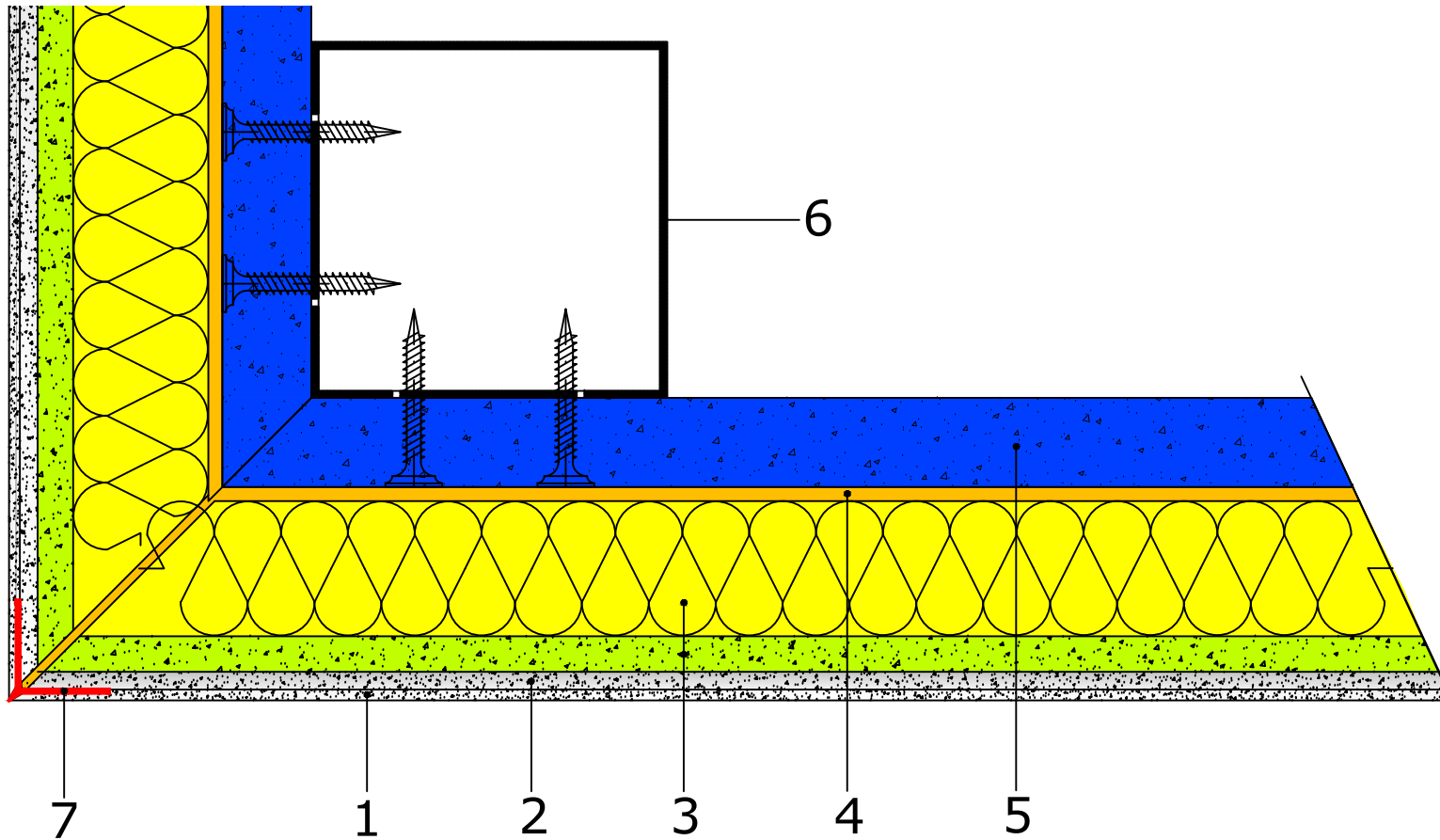
Project

## BASWA Detail

Title

Edge finish I35 outer corner  
with BASWAphon Hybrid Panel  
on one side

Project No. 0	Date 25.02.20	Scale 1:1 AT A4
Number Hamilton Detail I0		Revision 01



- 1. BASWAphon - Top surface layer
- 2. BASWAphon - Base primary layer
- 3. BASWAphon - Acoustic Panel
- 4. BASWafix K
- 5. Structural panel e.g plasterboard, Pre-fabricated plasterboard folding element
- 6. Construction profile
- 7. BASWAphon edge protection profile PVC

  
**HAMILTON**  
 ACOUSTIC SOLUTIONS

34 Purdeys Industrial Estate      Tel: 0203 595 3989  
 Purdeys Way                              Mob: 07973 886674  
 Rochford SS4 1ND                      www.hamiltonacoustic.com

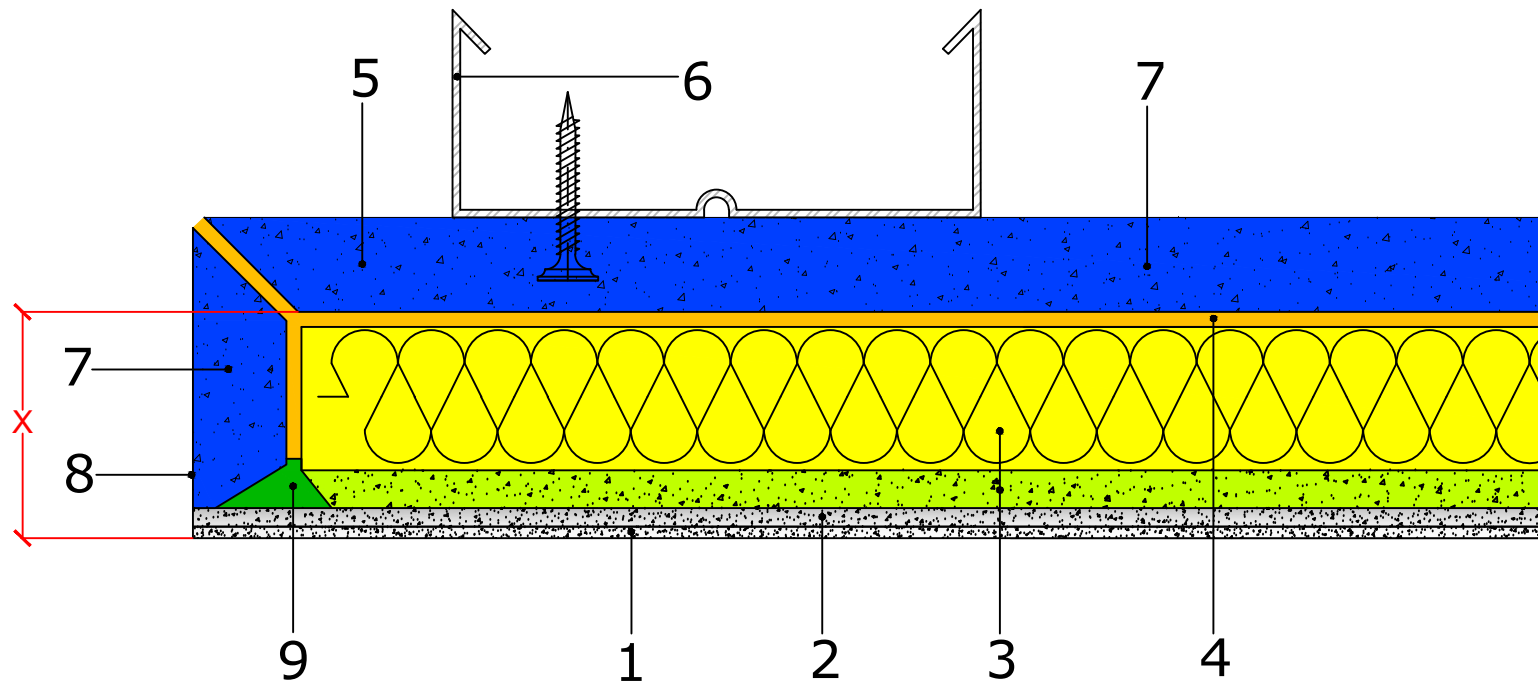
Project

## BASWA Detail

Title

Edge finish 90 outer corner  
with BASWAphon acoustic  
panels on both sides

Project No. 0	Date 25.02.20	Scale 1:1 AT A4
Number Hamilton Detail 11		Revision 01



1. BASWAphon - Top surface layer
2. BASWAphon - Base primary layer
3. BASWAphon - Acoustic Panel
4. BASWAfix K
5. Structural panel, e.g. plasterboard
6. Suspended construction
7. Pre-fabricated plasterboard folding element
8. Twice dispersion paint over paper coating
9. BASWAphon Fill seam filler

**HAMILTON**  
ACOUSTIC SOLUTIONS

34 Purdeys Industrial Estate      Tel: 0203 595 3989  
Purdeys Way                              Mob: 07973 886674  
Rochford SS4 1ND                      www.hamiltonacoustic.com

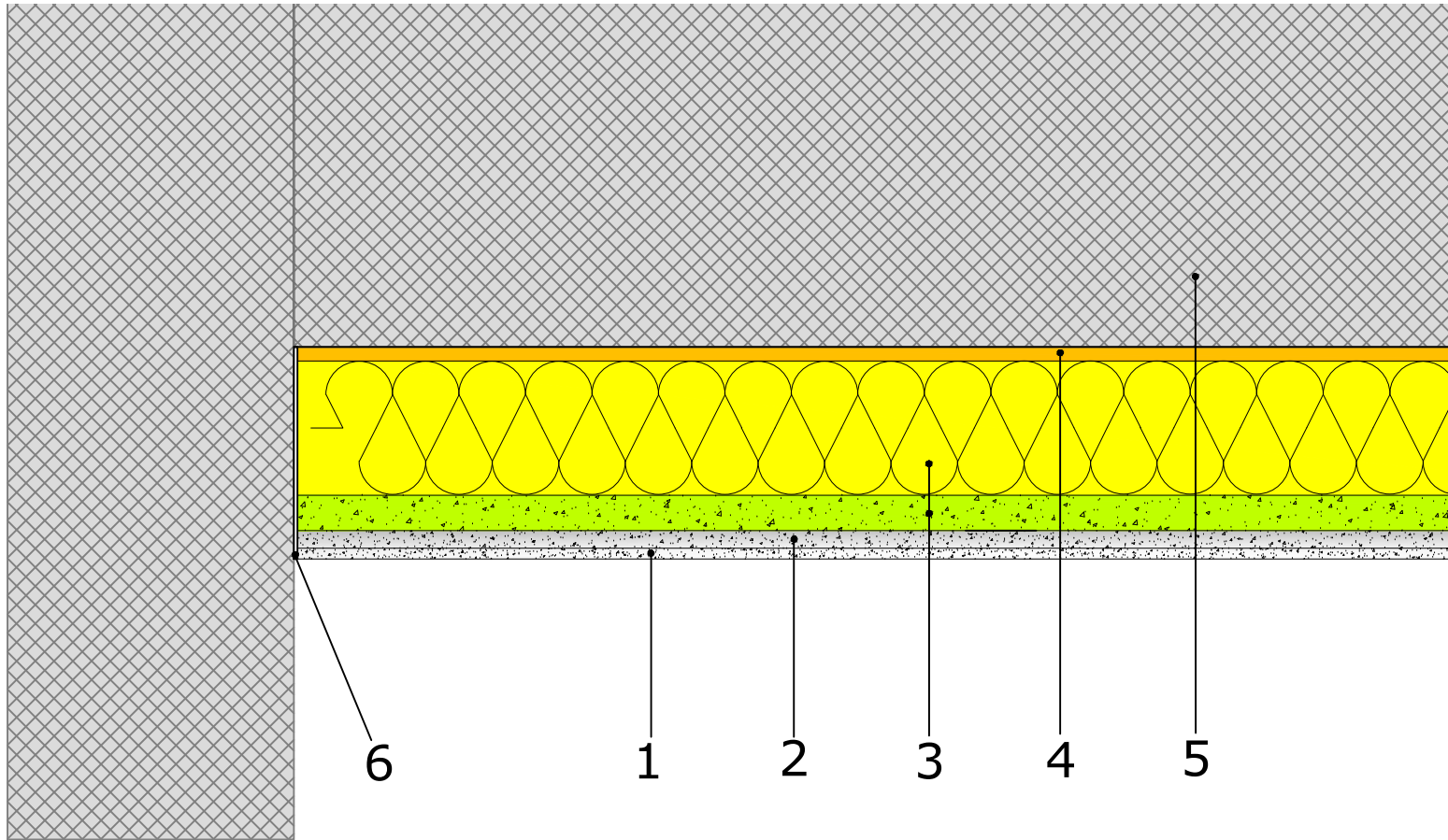
Project

## BASWA Detail

Title

### Edge formation ceiling canopy with Pre-fabricated plasterboard folding element

Project No. 0	Date 25.02.20	Scale 1:1 AT A4
Number Hamilton Detail 12		Revision 01



1. BASWAphon - Top surface layer
2. BASWAphon - Base primary layer
3. BASWAphon - Acoustic Panel
4. BASWAfix C adhesive cement-containing mortar
5. Concrete
6. Paper separation strip

  
**HAMILTON**  
 ACOUSTIC SOLUTIONS

34 Purdeys Industrial Estate      Tel: 0203 595 3989  
 Purdeys Way                              Mob: 07973 886674  
 Rochford SS4 1ND                      www.hamiltonacoustic.com

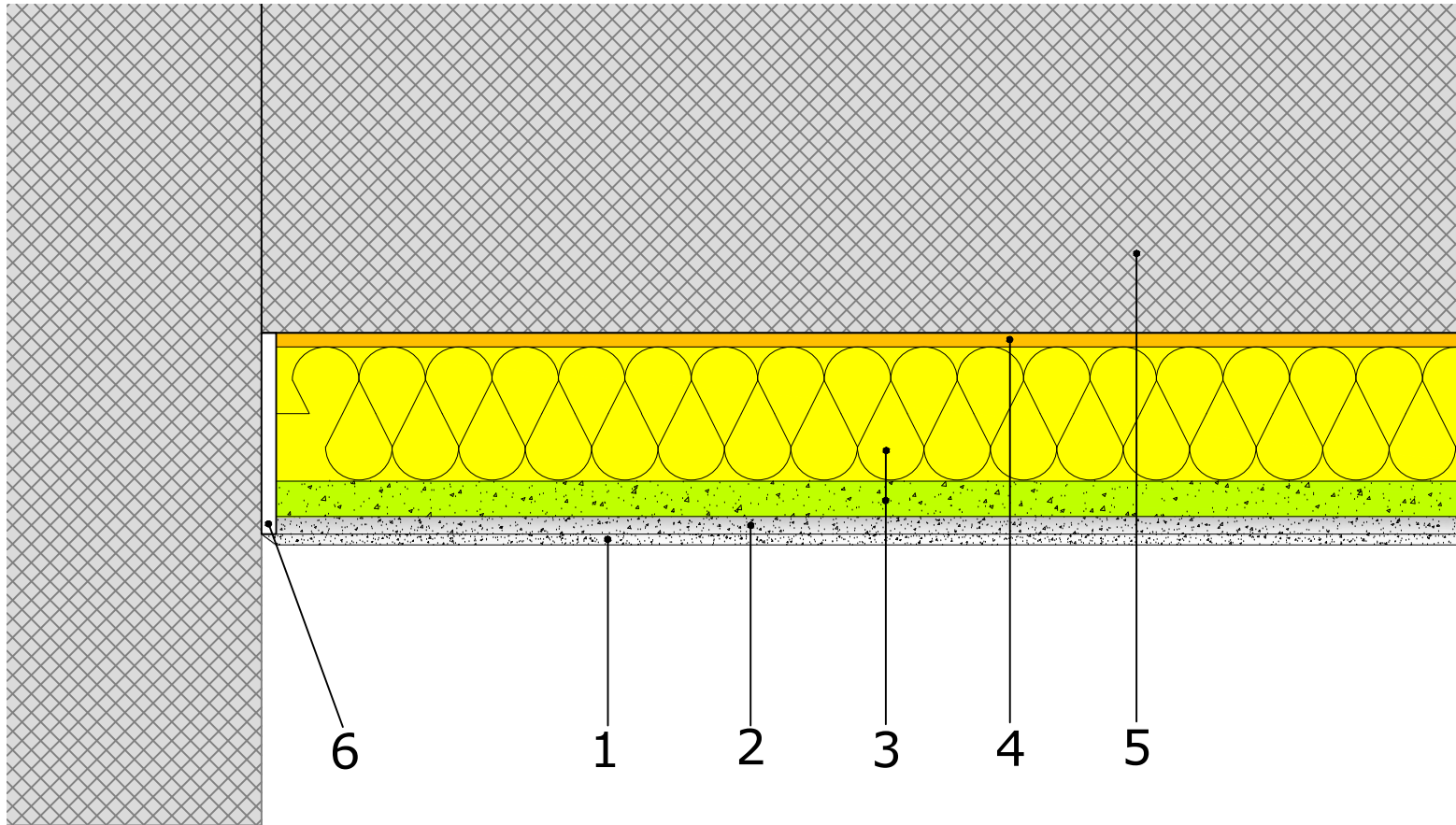
Project

**BASWA Detail**


Title

**Ceiling connection to elements  
with paper separation strip**

Project No. 0	Date 25.02.20	Scale 1:1 AT A4
Number Hamilton Detail 13		Revision 01



1. BASWAphon - Top surface layer
2. BASWAphon - Base primary layer
3. BASWAphon - Acoustic Panel
4. BASWAfix C adhesive cement-containing mortar
5. Concrete
6. Severance strip PE foam (cut off afterwards)

  
**HAMILTON**  
 ACOUSTIC SOLUTIONS

34 Purdeys Industrial Estate      Tel: 0203 595 3989  
 Purdeys Way                              Mob: 07973 886674  
 Rochford SS4 1ND                      www.hamiltonacoustic.com

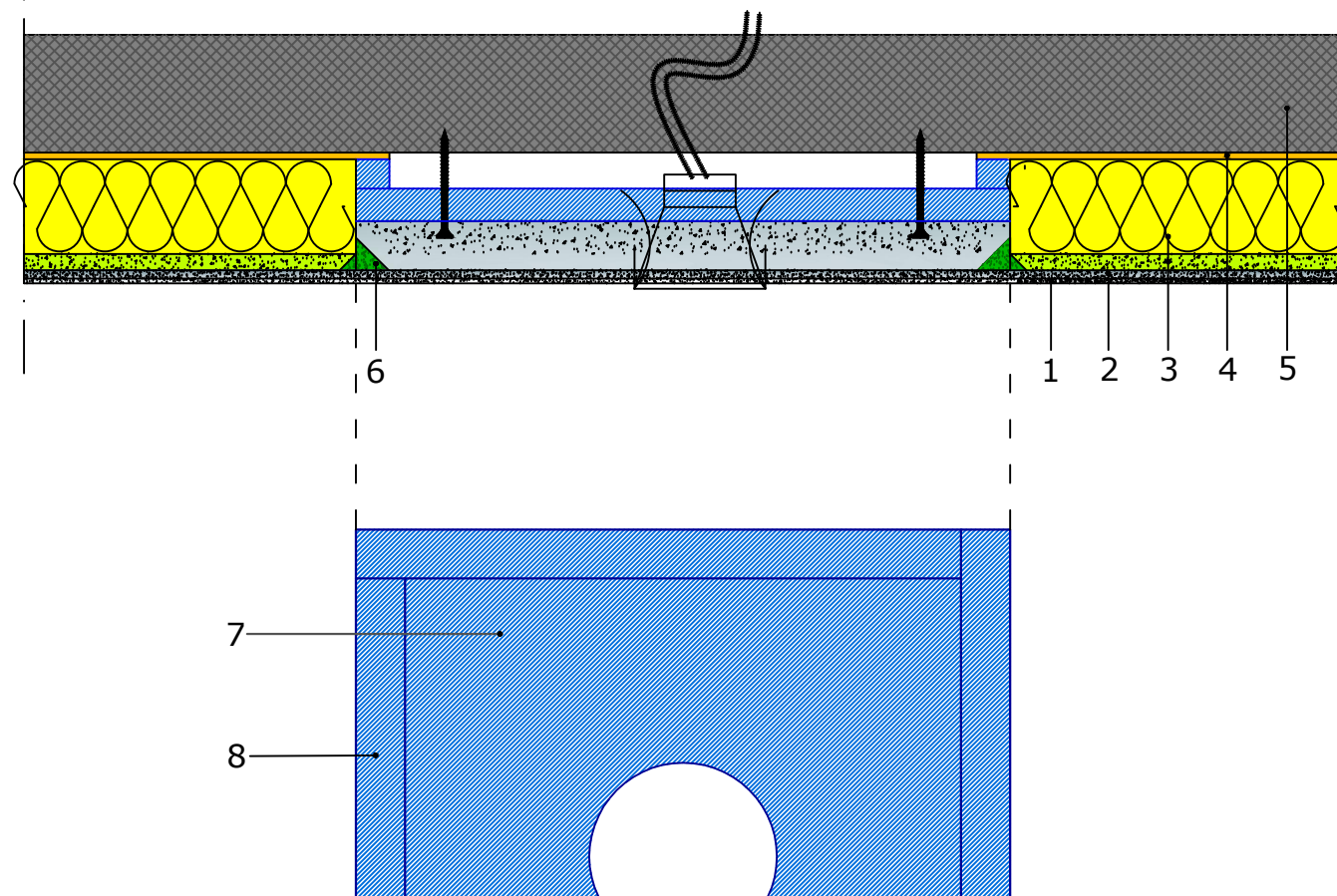
Project

**BASWA Detail**

Title

**Ceiling connection to elements  
with severance strip PE foam**

Project No. 0	Date 25.02.20	Scale 1:1 AT A4
Number Hamilton Detail I4		Revision 01



- 1. BASWAphon - Top surface layer
- 2. BASWAphon - Base primary layer
- 3. BASWAphon - Acoustic Panel
- 4. BASWAfix C
- 5. Concrete
- 6. BASWAphon Fill seam filler
- 7. Gypsum fibreboard with 10mm pre-coating (BASWA-IP)
- 8. Fixing / spacer frame

  
**HAMILTON**  
 ACOUSTIC SOLUTIONS

34 Purdeys Industrial Estate      Tel: 0203 595 3989  
 Purdeys Way                              Mob: 07973 886674  
 Rochford SS4 1ND                      www.hamiltonacoustic.com

Project

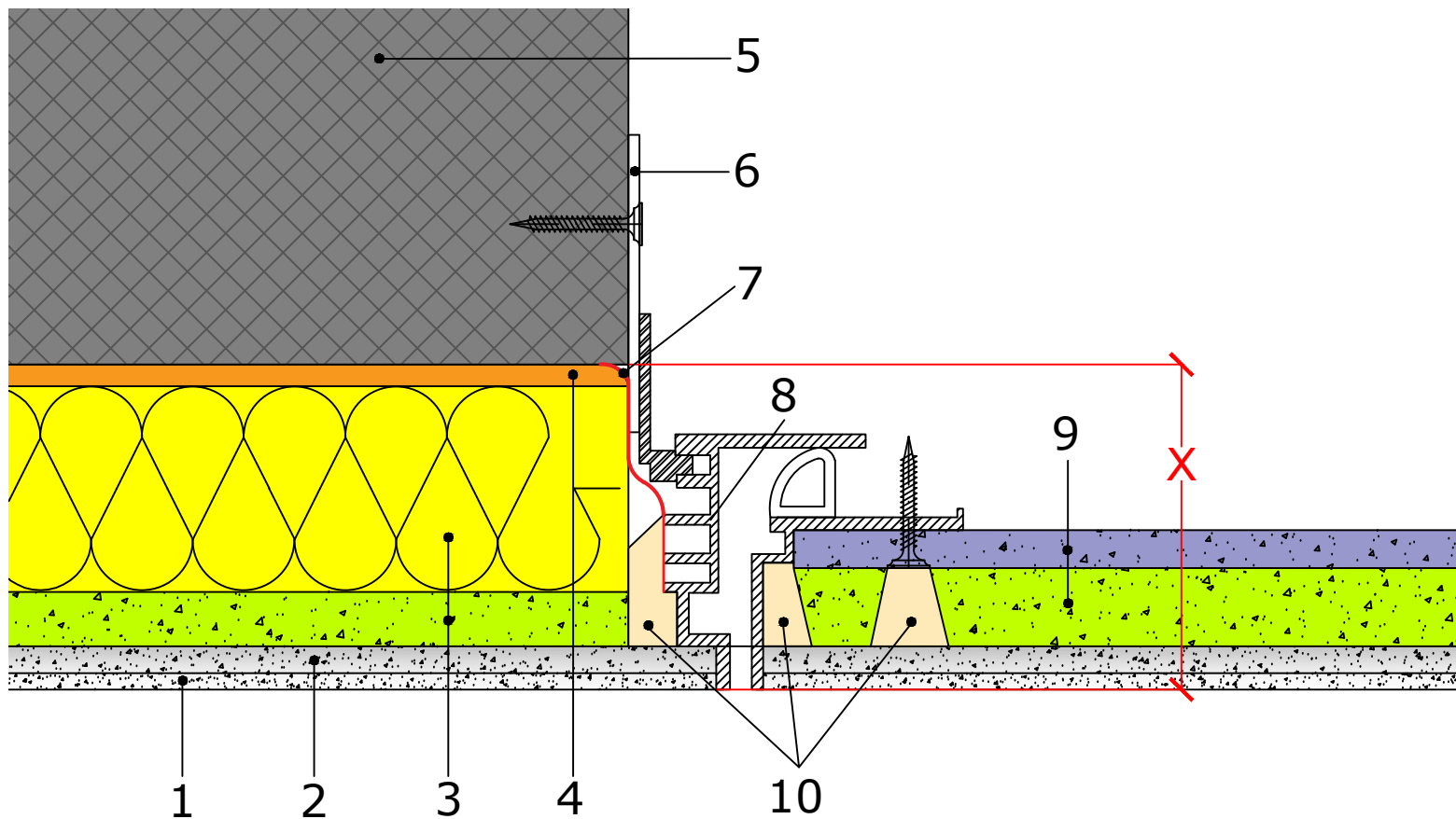
## BASWA Detail

Title

### Installation of spotlights, speakers, motion sensors, etc. with BASWA IP

Project No. 0	Date 25.02.20	Scale 1:1 AT A4
Number Hamilton Detail I5		Revision 01





1. BASWAphon - Top surface layer
2. BASWAphon - Base primary layer
3. BASWAphon - Acoustic Panel
4. BASWAfix C
5. Concrete
6. Access panels retaining tab
7. Vapour barrier adhesive tape (air tight)
8. Access panel BASWA (outer frame)
9. BASWAphon acoustic Inlay for access panels and projector hoists
10. BASWAphon Fill seam filler

**HAMILTON**  
ACOUSTIC SOLUTIONS

34 Purdeys Industrial Estate      Tel: 0203 595 3989  
Purdeys Way                              Mob: 07973 886674  
Rochford SS4 1ND                      www.hamiltonacoustic.com

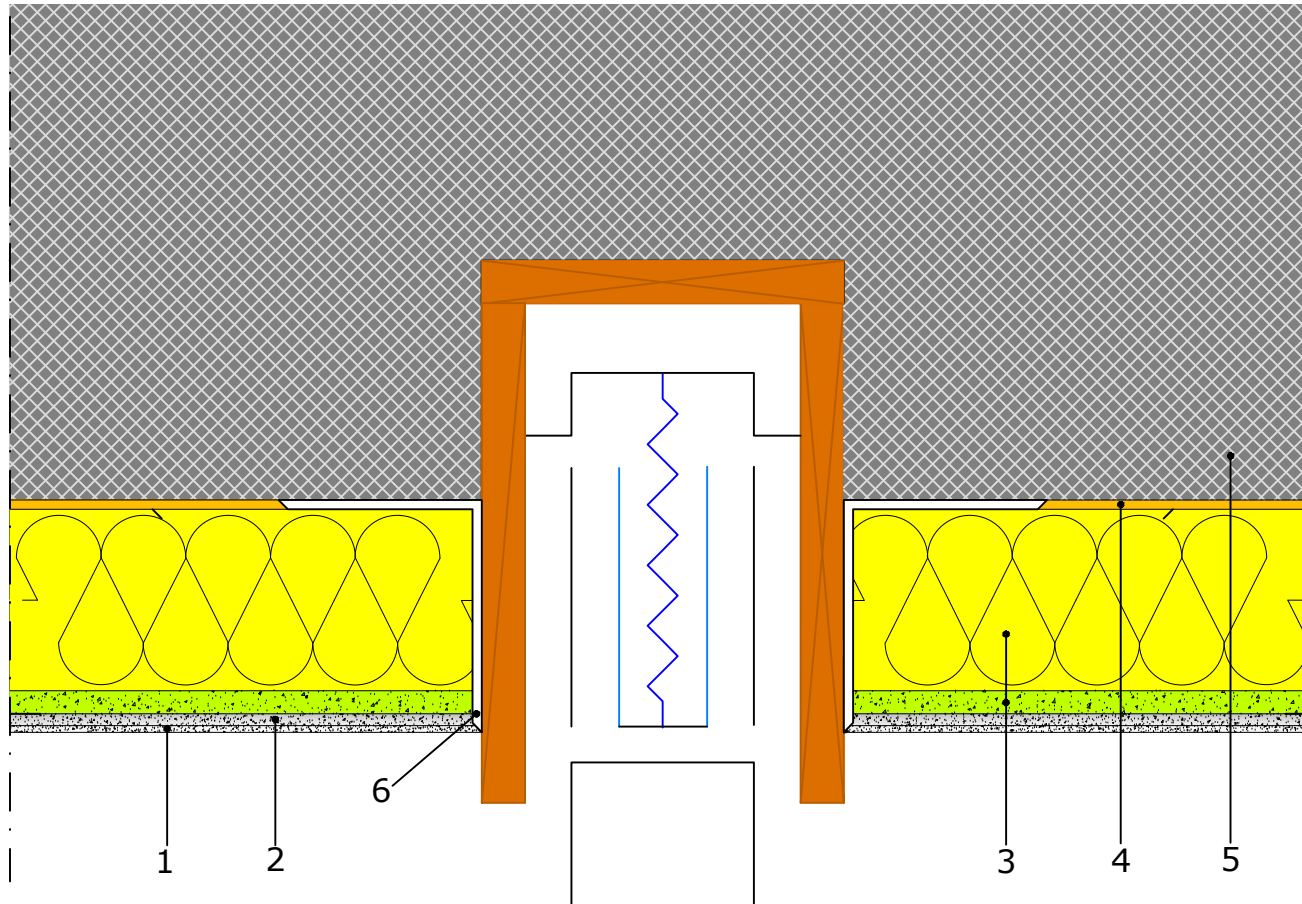
Project

## BASWA Detail

Title

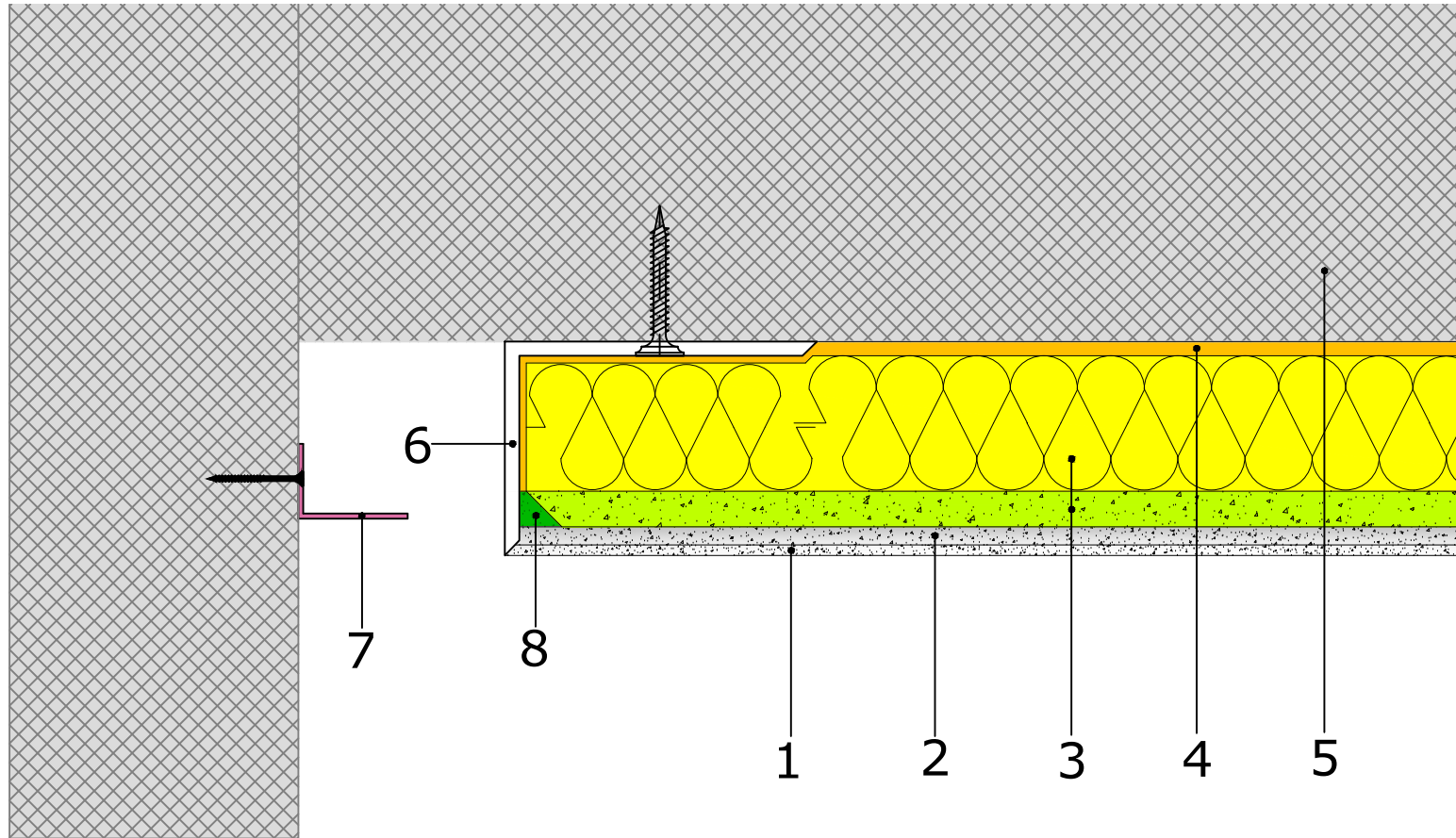
### Installation of access panels

Project No. 0	Date 25.02.20	Scale VARIES
Number Hamilton Detail 16		Revision 01



1. BASWaphon - Top surface layer
2. BASWaphon - Base primary layer
3. BASWaphon - Acoustic Panel
4. BASWAfix C
5. Concrete
6. Angle profile chrome steel or anodized aluminium

 <b>HAMILTON</b> ACOUSTIC SOLUTIONS		
34 Purdeys Industrial Estate Purdeys Way Rochford SS4 1ND		Tel: 0203 595 3989 Mob: 07973 886674 <a href="http://www.hamiltonacoustic.com">www.hamiltonacoustic.com</a>
Project		
<h2>BASWA Detail</h2>		
Title		
<b>Ceiling connection to elements</b> e.g. sliding door with angle profile chrome steel		
Project No.	Date	Scale
0	25.02.20	1:1 AT A4
Number		Revision
Hamilton Detail 17		01



1. BASWAphon - Top surface layer
2. BASWAphon - Base primary layer
3. BASWAphon - Acoustic Panel
4. BASWAfix C adhesive cement containing mortar
5. Concrete
6. Aluminium angle profile, white coated with PUR
7. Screen angle individual
8. BASWAphon Fill seam filler

  
**HAMILTON**  
 ACOUSTIC SOLUTIONS

34 Purdeys Industrial Estate      Tel: 0203 595 3989  
 Purdeys Way                              Mob: 07973 886674  
 Rochford SS4 1ND                      www.hamiltonacoustic.com

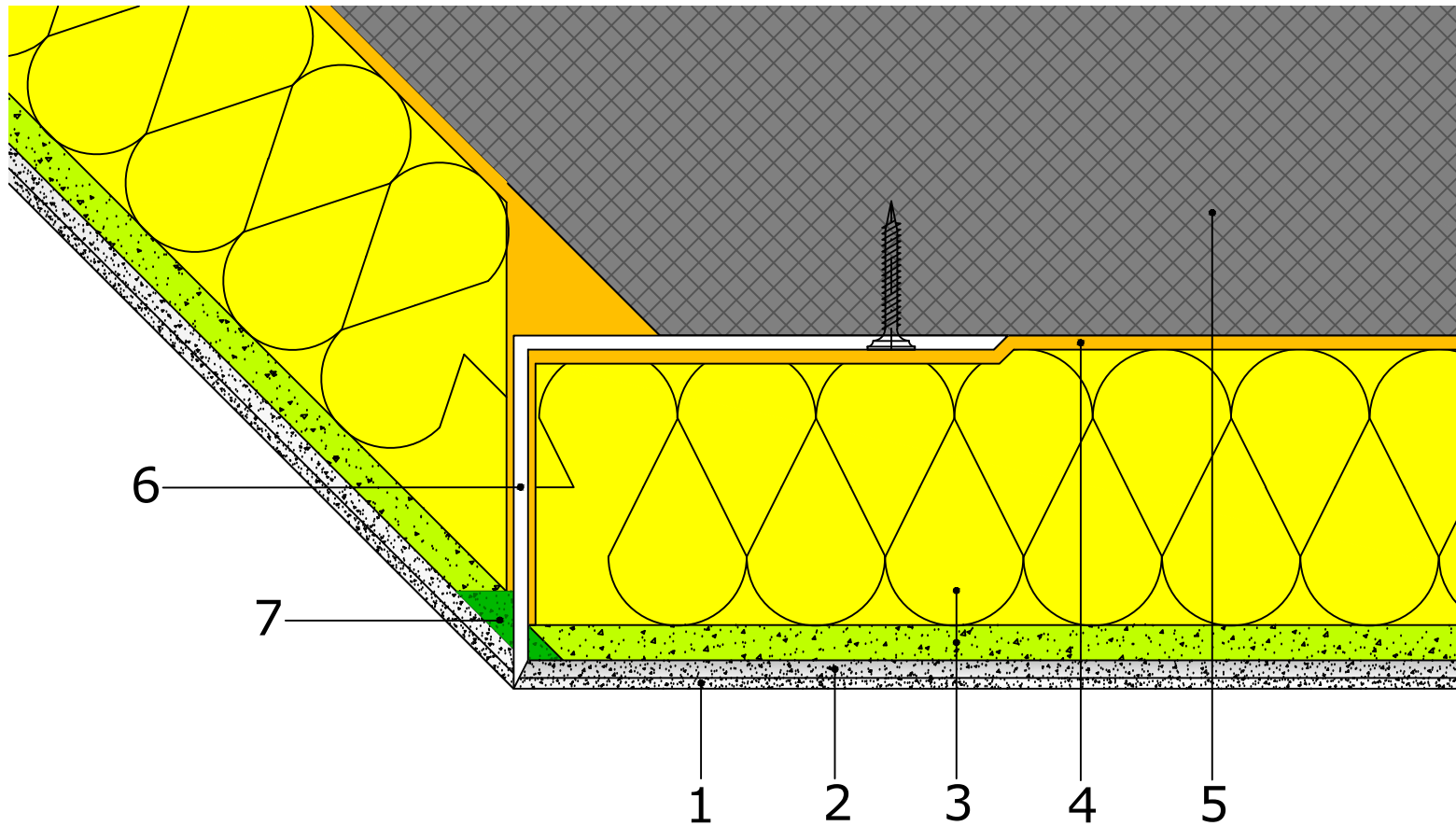
Project

## BASWA Detail

Title

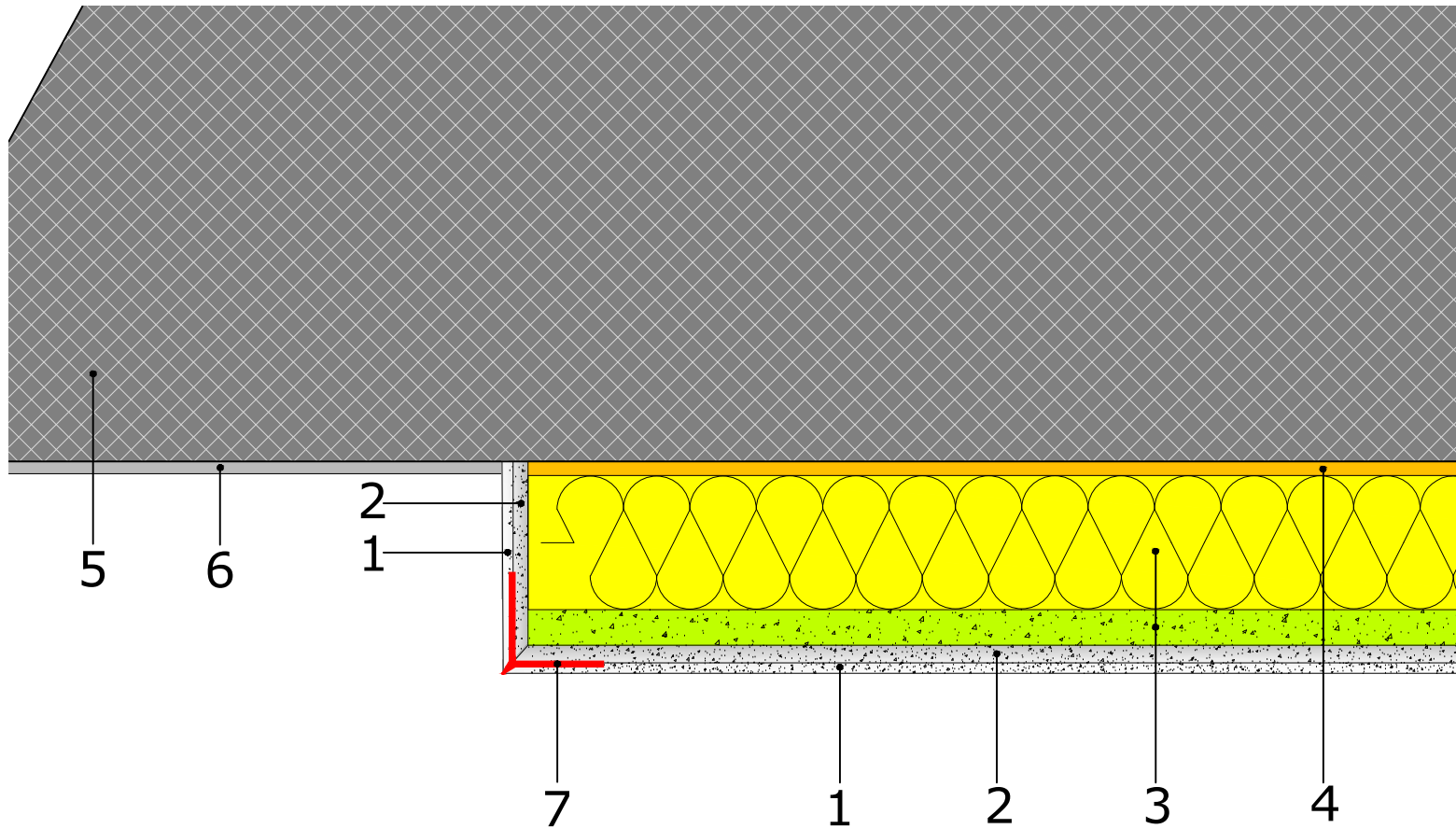
### Wall connection with shadow gap standard

Project No. 0	Date 25.02.20	Scale 1:1 AT A4
Number Hamilton Detail 18		Revision 01



1. BASWaphon - Top surface layer
2. BASWaphon - Base primary layer
3. BASWaphon - Acoustic Panel
4. BASWafix C
5. Concrete
6. Aluminium angle profile, white coated with PUR
7. BASWaphon Fill seam filler

		
34 Purdeys Industrial Estate      Tel: 0203 595 3989 Purdeys Way                              Mob: 07973 886674 Rochford SS4 1ND                        www.hamiltonacoustic.com		
Project		
<h2>BASWA Detail</h2>		
Title		
Edge finish I35 outer corner with BASWaphon acoustic panels on both sides		
Project No.	Date	Scale
0	25.02.20	1:1 AT A4
Number		Revision
Hamilton Detail I9		01



1. BASWAphon - Top surface layer
2. BASWAphon - Base primary layer
3. BASWAphon - Acoustic Panel
4. BASWAfix C
5. Concrete
6. Smooth plaster painted, exposed concrete or similar
7. BASWAphon edge protection profile PVC

		
34 Purdeys Industrial Estate      Tel: 0203 595 3989 Purdeys Way                              Mob: 07973 886674 Rochford SS4 1ND                      www.hamiltonacoustic.com		
Project		
<h2>BASWA Detail</h2>		
Title		
<b>Edge formation with edge guard PVC front face with BASWAphon coating</b>		
Project No.	Date	Scale
0	25.02.20	1:1 AT A4
Number		Revision
Hamilton Detail 20		01